



MARYLAND CHILD CARE  
RESOURCE NETWORK

## CHILD CARE DEMOGRAPHICS • 2023

### Baltimore City Report

*The Maryland Child Care Resource Network and Maryland Family Network, Inc. are co-publishers of this Baltimore City Report for the Network's Maryland Child Care Demographics Report series. The series includes reports for the State, for each of Maryland's 23 counties and the City of Baltimore.*



MARYLAND  
FAMILY  
NETWORK

### Frequently Requested Child Care Information

Baltimore is centrally located in the Mid-Atlantic region with optimal access via highways, port, rail, and air travel. Baltimore City's optimal location and wide range of transportation options makes the city highly attractive to both residents and businesses. Approximately 2.8 million people live in Baltimore and its surrounding region and has six key industry sectors that present further growth opportunities – financial and professional services, health and bioscience technology, culture and tourism, information and creative services, logistics, and advanced manufacturing.

In 2021, the Baltimore Development Corporation made great strides towards Baltimore City's economic recovery initiative by starting programs that support small businesses citywide and stand by the Black community. These efforts are in response to the 2020 year to support businesses impacted by the pandemic as well as help put an end to racial inequity in Baltimore City.

Baltimore City has more than 60 federal agencies and research labs within 30 miles, bringing substantial federal spending and jobs to the city. The City's private sector industries generate \$36.7 billion in economic output. Top employers in Baltimore City include University of Maryland Medical Center, Under Armour Inc, Prometric Inc, Onemain Financial, Medstar Harbor Hospital, and Legg Mason Inc. Baltimore is also home to 13 colleges and universities, including internationally recognized John Hopkins and University of Maryland, providing Baltimore an intellectual and talented workforce.

"Baltimore, the Best Place to Do Business." Baltimore Development Corporation, <http://baltimoredevelopment.com/>.

<https://commerce.maryland.gov/documents/researchdocument/baltcitybef.pdf>  
Source: Maryland Department of Commerce, Brief Economic Facts, 2019.

<https://www.census.gov/quickfacts/fact/table/MD,US/PST045219> Source: United States Census Bureau, Quick Facts Baltimore City, United States, 2021

### Child Population 2021

Age Group	Number in age group
0-2 years	21,350
3-4 years	15,159
5 years	6,999
6-8 years	19,442
9-11 years	19,862
Total Children in Households Aged 0-11	82,812

Source: US Bureau of the Census, American Community Survey 2021

### Child Care Costs as Compared to Other Major Household Expenses

The estimated current median family income in Baltimore City is \$64,814<sup>6</sup>. A family of four that included a couple and two children ages 0-23 months and 2-4 years can be expected to have the following yearly household expenses:

Expense	Cost	% of Income
Child Care	\$22,126	34.10%
Infant <sup>1</sup>	\$10,363	
Preschooler <sup>2</sup>	\$11,763	
Food <sup>3</sup>	\$12,612	19.50%
Housing <sup>4</sup>	\$17,820	27.50%
Taxes <sup>5</sup>	\$6,333	9.80%
Total	\$58,891	90.90%

<sup>1</sup> Average cost of full-time care in a family child care home (LOCATE, 2022).

<sup>2</sup> Average cost of full-time care in a child care center (LOCATE, 2022). <sup>3</sup> National average cost of food at home based on a moderate cost plan (Cost of Food at Home Estimated for Food Plans at Four Cost Level, July 2022), U.S. Average, United States Department of Agriculture). <sup>4</sup> Based on U.S. Bureau of the Census 2020 median selected owner costs with a mortgage; included mortgage, taxes, insurance and utilities. <sup>5</sup> State and local taxes per Comptroller of Maryland (2022), Medicare and FICA taxes per moneychimp.com (2022). Taxes do not reflect Earned Income Credit. <sup>6</sup> Current income as shown in the Geolytics Report dated July 2022. This data cannot be compared to previous data.

### Average Weekly Cost of Full-time Child Care

Baltimore City	Family Child Care Programs	Child Care Centers
0-23 months	\$199.29	\$294.36
2-4 years	\$167.28	\$226.22
5 years <sup>1</sup>	\$151.59	\$208.41
School Age Full <sup>2</sup>	\$142.29	\$192.82
School Age B/A <sup>3</sup>	\$99.95	\$120.33

Source: MFN/LOCATE: Child Care, 6/22.

<sup>1</sup> Average cost of full time care for a 5 year old. Defined as child being in full time child care or being in kindergarten and out-of-school child care, i.e., holidays, school closures and summers. <sup>2</sup> Average cost of full time care for a 6+ school age child (out-of-school child care, i.e., holidays, school closures and summers). <sup>3</sup> Average cost of before and after school child care.

### Population Information

#### Child Population<sup>1</sup>

	2011		2021	
	Baltimore City	Maryland	Baltimore City	Maryland
0-2 years	25,757	215,677	21,350	210,211
3-4 years	15,577	149,276	15,159	153,201
5 years	7,642	73,189	6,999	73,309
6-8 years	19,989	216,607	19,442	226,304
9-11 years	21,671	224,348	19,862	235,320
Total	90,636	879,097	82,812	898,345

Source: US Bureau of the Census, American Community Survey 2011, 2021

#### Total Births in 2000 to women under 20 Years of age: 1,070

Source: Maryland Department of Health & Mental Hygiene Vital Statistics Administration, December 2011

#### Work Force Information

##### Total Population Ages 16+ in Work Force

	Baltimore City	Maryland
<b>2011</b>		
Females	183,722	1,706,926
Males	165,590	1,772,418
<b>2021</b>		
Females	156,401	1,624,157
Males	143,437	1,706,122
<b>Change</b>		
Females	-14.9%	-4.8%
Males	-13.4%	-3.7%

Source: US Bureau of the Census, American Community Survey 2011, 2021  
\* Does not include the population not in the Labor Force

#### Females Aged 16+ with Children Under 18

Age Group	2011	2021	Change
Total Children Under 6 years old	45,488	41,518	-8.7%
Children Under 6 with all custodial parents working	31,935	29,244	-8.4%
Total Children 6-17 years old	76,496	70,883	-7.3%
Children 6-17 with all custodial parents working	57,878	51,795	-10.5%

Source: US Bureau of the Census, American Community Survey 2011, 2021

#### Total Population

	Baltimore City	Maryland
2021	592,211	6,148,545
2011	620,210	5,736,545
2000	651,154	5,296,486
1990	736,014	4,780,753
1980	786,775	4,216,975

Source: US Bureau of the Census, 1980, 1990, 2000; American community Survey 2011, 2021

#### Female Population (selected ages)

Age Group	2011	2021
Aged 20-24	28,983	20,473
Aged 25-29	30,151	29,391
Aged 30-34	23,067	28,471
Total Aged 20-34	82,201	78,335

Source: US Bureau of the Census, American Community Survey 2011, 2021

#### Male Population (selected ages)

Age Group	2011	2021
Aged 20-24	26,041	18,601
Aged 25-29	26,698	26,947
Aged 30-34	21,229	26,285
Total Aged 20-34	73,968	71,833

Source: US Bureau of the Census, American Community Survey 2011, 2021

#### Households

	2011	2021
Total household population	596,748	568,017
Total number of households	238,959	244,893
Average household size	2.50	2.32

Source: US Bureau of the Census, American Community Survey 2011, 2021

### Census Information

#### Families and Poverty

	2011	% in Poverty	2021	% in Poverty	% Change
All Families	127,029		119,410		-6.0%
Families Below Poverty Level	22,435	17.7%	18,289	15.3%	-18.5%
All Families with Children Under 5	28,103		22,742		-19.1%
All Families w Children Under 5 Below Poverty Level	8,634	30.7%	6,442	28.3%	-25.4%
All Families w Children Under 18	67,654		56,925		-15.9%
All Families w Children Under 18 Below Poverty Level	17,592	26.0%	13,436	23.6%	-23.6%

Source: US Bureau of the Census, American Community Survey 2011, 2021

#### Children and Poverty

	2011	% in Poverty	2021	% in Poverty	% Change
Total Related Children Under 18	133,208		119,669		-10.2%
Total Children Under 18 Below Poverty Level	42,547	31.9%	33,345	27.9%	-21.6%
Total Children Under 5 Below Poverty Level	13,469	33.2%	10,400	28.8%	-22.8%
Children 5-17 Below Poverty Level	29,078	31.4%	22,945	27.5%	-21.1%

Source: US Bureau of the Census, American Community Survey 2011, 2021

#### Educational Attainment for Adults over 25 Years

	Baltimore City	% of Adults	Maryland	% of Adults
Total Adults Aged 25 or More	414,928		4,240,795	
High School Graduate or Higher	358,212	86.3%	3,849,442	90.8%
Bachelors Degree or Higher	141,930	34.2%	1,762,482	41.6%

Source: US Bureau of the Census, American Community Survey 2011, 2021

#### Families

Baltimore City	2011	2021	% Change
Total Families	127,029	119,410	-6.0%
Total # of All Families with Related Children Under Age 6*	24,405	21,107	-13.5%
Total # of All Families with Related Children Under Age 18	54,011	47,347	-12.3%
Maryland	2011	2021	% Change
Total Families	1,428,101	1,516,689	6.2%
Total # of All Families with Related Children Under Age 6*	269,284	260,117	-3.4%
Total # of All Families with Related Children Under Age 18	656,740	638,539	-2.8%

Source: US Bureau of the Census, American Community Survey 2011, 2021

\*Includes Families with children under 6 AND Families with children under 6 and aged 6-17

### Income, Unemployment and Housing Information

#### Annual Wage Rate Information

Public School Teacher Salary (Baltimore City) <sup>1</sup>	\$54,691
Public School Teacher Salary Average (MD) <sup>1</sup>	\$64,259
Nonpublic School Teacher Average (Maryland)	\$60,500
Family Child Care Provider (Maryland)	\$41,753
Child Care Center Director (Maryland)	\$41,372
Center Senior Staff/Teacher (Maryland)	\$25,905
Center Aide (Maryland)	\$17,491

<sup>1</sup>Maximum teacher salary with Bachelor's and Standard Professional Certificate (SPC). Sources: MSDE, Sept 2022, Association of Independent Maryland Schools (AIMS), 2021-22 school year, and MFN's 2022 Statewide Survey of Family Child Care Providers and Child Care Centers.

#### Family Income

##### Median Family Income

Baltimore City	\$67,462
Maryland	\$111,378

Source: US Bureau of the Census, American Community Survey 2011, 2021

##### Median Household Income<sup>1</sup>:

Baltimore City	\$54,124
Maryland	\$91,431

#### Income Distribution Percent Households

	Baltimore City	Maryland
Under \$25,000	26%	12.3%
\$25,000-\$49,999	21%	14.6%
\$50,000-\$74,999	17%	14.7%
\$75,000 +	36%	58.5%
Total Households	244,893	2,294,270

Source: US Bureau of the Census, American Community Survey 2011, 2021

NOTE: Percentages may not total 100% because of rounding

#### Housing Information

	Baltimore City	%	Maryland	%
Owner-Occupied housing	117,377	47.9%	1,543,719	67.3%
Renter-Occupied housing	127,516	52.1%	750,551	32.7%
Mean Value of Owner-Occupied Housing	\$175,300		\$338,500	
Median Selected Monthly Owner Costs with a Mortgage	\$1,555		\$2,111	
Median Gross Residential Monthly Rent	\$1,146		\$1,485	

Source: US Bureau of the Census, American Community Survey 2011, 2021

#### Unemployment Rate

	Baltimore City	Maryland
2001	8.0%	4.0%
2002	7.5%	3.9%
2003	8.4%	4.1%
2004	8.2%	3.9%
2005	7.1%	3.9%
2006	6.6%	3.7%
2007	6.0%	3.6%
2008	7.1%	4.5%
2009	10.6%	7.1%
2010	11.0%	7.3%
2011	10.4%	7.2%
2012	10.2%	6.5%
2013	9.4%	6.2%
2014	8.5%	5.6%
2015	7.4%	5.0%
2016	6.7%	4.5%
2017	6.2%	4.3%
2018	6.3%	4.5%
2019	5.5%	3.9%
2020	10.0%	8.3%
2021	8.5%	6.7%
2022	5.1%	3.7%

Maryland Department of Labor, 6/2022.



### Supply of Regulated Early Childhood Programs and Education

#### Children's Programs by Type with Capacity/ Enrollment

	# of Programs	Capacity <sup>1</sup>
Family Child Care Providers	409	3,170
*OCC Licensed Group Programs	283	13,631
8-12 Hour Child Care Centers	194	8,524
Infant/Toddler	120	774
Part-Day	12	N/A
Before/after School (School & Center-Based)	139	6,034
Employer-Sponsored Centers	6	433
Nursery Schools	22	N/A
Private Kindergarten	16	N/A
**Head Start	41	3,204
***Public Pre-Kindergarten Sites	113	N/A
Total Infant/Toddler	512	1,589
Youth Camp	3	N/A

<sup>1</sup>Some providers may still be closed due to COVID 19 considerations.

\*Note: Numbers do not total because facilities may have more than one type of program. Unless otherwise indicated, all programs are privately funded.

\*\* Federally funded programs which include Head Start, Early Head Start and Home-based Head Start.

\*\*\*State funded.

Source: MFN/LOCATE Child Care, 6/22; Maryland State Department of Education; Department of Health and Mental Hygiene.

#### Education

##### Public and Private Schools (Elementary and Middle)

	Public	Private*
Elementary Schools	37	7
Middle Schools	3	1
Combined	56	38

##### Elementary School Enrollment

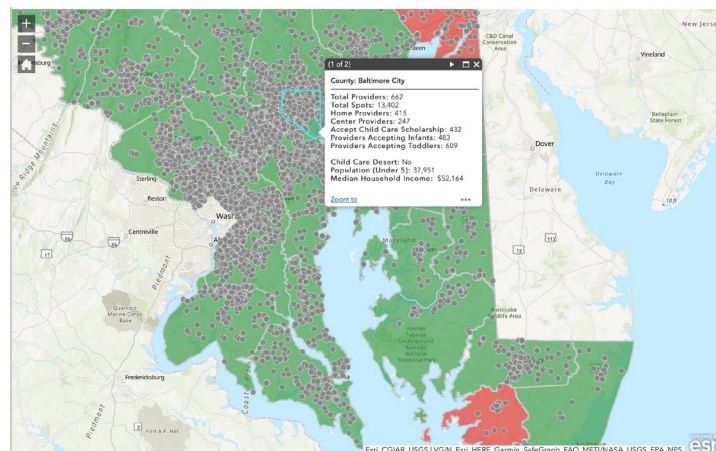
	Public	Private*
Pre-Kindergarten	3,766	594
Kindergarten	5,579	855
Grades 1 - 6	34,331	5,090
Total	43,676	6,539

Source: MSDE, 2021-22 school year. Enrollment figures are for September 30, 2021. Private schools include MSDE approved schools and those operated by a tax-exempt religious organization which hold a letter of exemption from approval in accordance with State law.

\*Self reported data from Maryland Nonpublic Schools as reported to MSDE.\*Self reported data from Maryland Nonpublic Schools as reported to MSDE.

### Maryland Child Care Supply and Demand Map

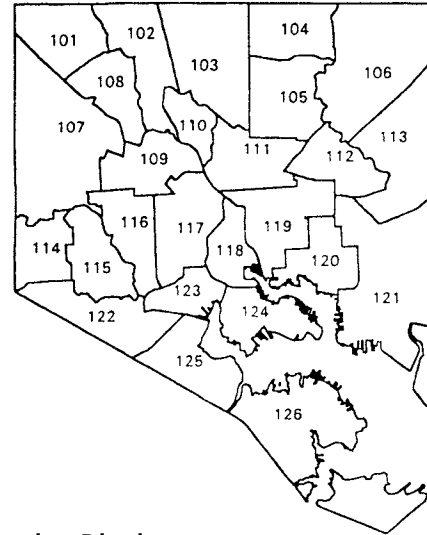
Maryland Family Network and Upfront partnered to create a real-time map of Maryland's child care landscape to identify deserts by county, legislative, and congressional districts. <https://locatesearch.marylandfamilynetwork.org/map>



### Supply of Child Care

#### Regional Planning Districts

101 Upper Park Heights	115 Irvington
102 Mount Washington	116 Rosemont
103 Roland Park	117 West Baltimore
104 Chinquapin	118 Metrocenter
105 Govans-Northwood	119 East Baltimore
106 Hamilton	120 Highlandtown
107 Forest Park	121 Canton
108 Lower Park Heights	122 Morrell Park
109 Druid Hill	123 Carroll Park
110 Hampden	124 South Baltimore
111 Waverly	125 Cherry Hill
112 Clifton	126 Brooklyn
113 Gardenville	
114 Ten Hills	



#### Density of Family Providers and Center Programs by Regional Planning District

The following chart shows the number of registered family child care providers and licensed full-day child care centers in Baltimore City as of June 30, 2022.

	Family Child Care	Family Total	% of Total	Center Child Care	Center Total	% of Total
101 Upper Park Heights	16	408	3.9%	8	194	4.1%
102 Mount Washington	3	408	0.7%	3	194	1.5%
103 Roland Park	1	408	0.2%	13	194	6.7%
104 Chinquapin	38	408	9.3%	3	194	1.5%
105 Govans-Northwood	33	408	8.1%	9	194	4.6%
106 Hamilton	41	408	10.0%	12	194	6.2%
107 Forest Park	26	408	6.4%	18	194	9.3%
108 Lower Park Heights	12	408	2.9%	7	194	3.6%
109 Druid Hill	11	408	2.7%	4	194	2.1%
110 Hampden	1	408	0.2%	1	194	0.5%
111 Waverly	13	408	3.2%	10	194	5.2%
112 Clifton	28	408	6.9%	7	194	3.6%
113 Gardenville	39	408	9.3%	15	194	7.7%
114 Ten Hills	16	408	3.9%	2	194	1.0%
115 Irvington	16	408	3.9%	9	194	4.6%
116 Rosemont	21	408	5.1%	12	194	6.2%
117 West Baltimore	28	408	6.9%	12	194	6.2%
118 Metrocenter	0	408	0.0%	12	194	6.2%
119 East Baltimore	22	408	5.4%	9	194	4.6%
120 Highlandtown	17	408	4.1%	10	194	5.2%
121 Canton	3	408	0.7%	4	194	2.1%
122 Morrell Park	8	408	2.0%	3	194	1.5%
123 Carroll Park	3	408	0.7%	0	194	0.0%
124 South Baltimore	2	408	0.5%	8	194	4.1%
125 Cherry Hill	11	408	2.7%	1	194	0.5%
126 Brooklyn	0	408	0.0%	2	194	1.0%
Totals		408			194	

### Supply of Regulated Child Care

#### Overview of Child Care in Baltimore

##### Family Child Care

Providers willing to accept infants (0-11 months):	371
Providers willing to accept infants (12-23 months):	377
Providers willing to accept school-age children before and/or after school:	326
Providers willing to accept half-day children before and/or after preschool or kindergarten:	325
Providers willing to accept CCS <sup>1</sup> vouchers	308
Providers willing to offer evening, overnight and/or weekend care:	207
Providers who serve meals:	338
Providers who have experience caring for a child with special needs:	282
Total Number of Family Child Care Providers:*	409

##### Group Child Care

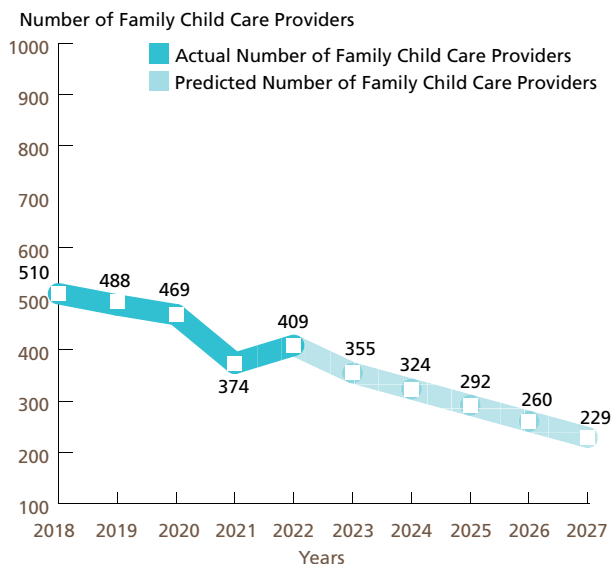
Programs willing to accept infants (0-11 months):	116
Programs willing to accept infants (12-23 months):	117
Programs willing to accept school-age children before and/or after school:	117
Programs willing to accept half-day children before and/or after preschool or kindergarten:	99
Programs willing to accept CCS <sup>1</sup> vouchers	150
Programs willing to offer evening, overnight and/or weekend care:	39
Programs who serve meals:	151
Programs who have experience caring for a child with special needs:	136
Total Number of Group Child Care Providers:*	283

<sup>1</sup>Child Care Scholarship

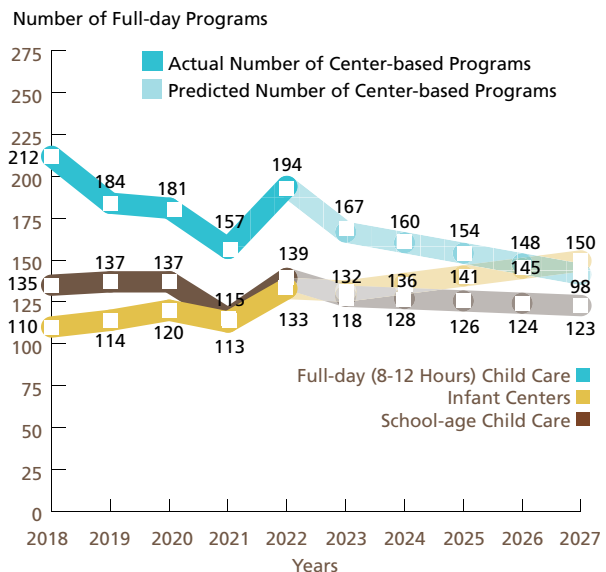
\*Numbers do not total because providers may offer more than one type of service. Source: MFN/LOCATE: Child Care, 6/22.

#### Past and Anticipated Growth Patterns for Family/Center Providers

##### Family Child Care Providers in Baltimore 2018-2027



##### Center-based Programs in Baltimore 2018-2027 Full-day (8 to 12 hours)



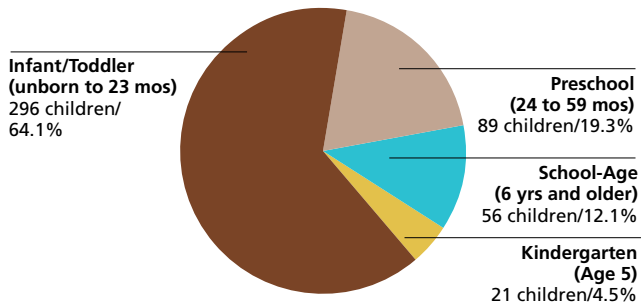
These predictions were generated with the use of the Multiple Regression Analysis and Forecasting template. The predictions generated by the Model do not reflect the effects of current changes to social programs affecting child care.  
 Source: MFN/LOCATE: Child Care, 6/22.



### Demand of Regulated Child Care

#### Children Served by Age

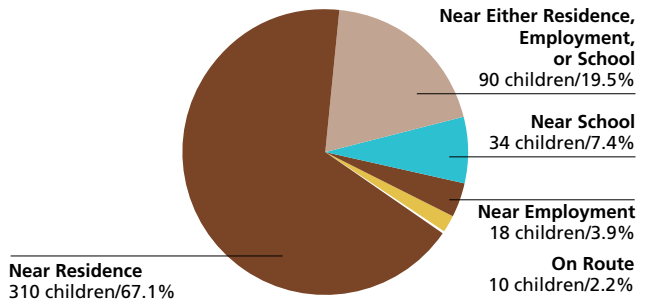
N=462



Source: LOCATE: Child Care at Maryland Family Network, Baltimore (7/1/21-6/30/22).  
NOTE: Percentages may not total 100% because of rounding.

#### Children Served by Locational Preferences for Care

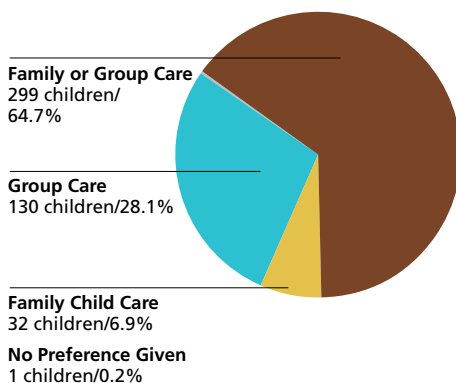
N=462



Source: LOCATE: Child Care at Maryland Family Network, Baltimore (7/1/21-6/30/22).  
NOTE: Percentages may not total 100% because of rounding.

#### Children Served by Type of Care Preferred

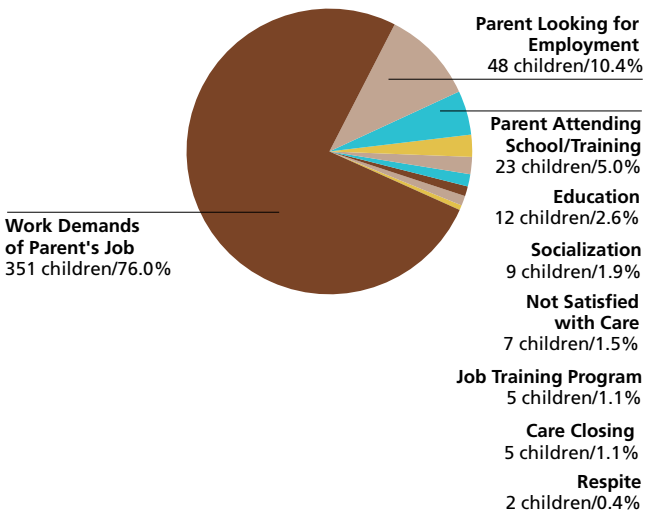
N=462



Source: LOCATE: Child Care at Maryland Family Network, Baltimore (7/1/21-6/30/22).  
NOTE: Percentages may not total 100% because of rounding.

#### Reason Child Care is Needed

N=462



Source: LOCATE: Child Care at Maryland Family Network, Baltimore (7/1/21-6/30/22).  
NOTE: Percentages may not total 100% because of rounding.

### Demand for Child Care

**Number of Children Served by LOCATE: Child Care**  
462 children (7/1/21-6/30/22)

#### Full-time or Part-time Care Needs of Children Served N=462

Full-time: 361 children (78.1%)

Part-time: 81 children (17.5%)

Other\*: 20 children (4.3%)

\* Includes requests for sick, backup and temporary care.

Source: LOCATE: Child Care at Maryland Family Network, Baltimore (7/1/21-6/30/22).

NOTE: Percentages may not total 100% because of rounding.

#### Child Care Scholarship Program (CCS)\*

**LOCATE Calls received from parents with children eligible for Child Care Scholarship**  
186 (44.0% of all calls)

**LOCATE Calls received from parents with children receiving Child Care Scholarship**  
54 (12.8% of all calls)

Source: LOCATE: Child Care at Maryland Family Network, Baltimore (7/1/21-6/30/22).

\* Formerly Child Care Subsidy Program

#### Major Reasons Parents Could Not Find Child Care in Baltimore City

Reason	Count
Other	3
Cost	2
No vacancies for School Age	2
Location	1
No vacancies for Infant	1
Schedule	1

Source: LOCATE: Child Care at Maryland Family Network, Baltimore (7/1/21-6/30/22).

#### Major Factors Important to Parents Who Found Child Care in Baltimore City

Factor	Count
Environment	29
Proximity to home, work, school	28
Cost	22
Educational program	17
Caregiver	15
Hours of operation/part time	14
Only program/provider with a vacancy	5

Source: LOCATE: Child Care at Maryland Family Network, Baltimore (7/1/21-6/30/22).

### Supply of Child Care

#### Child Care Scholarship Program (CCS)\*

**Family Child Care Providers willing to care for CCS children in Baltimore City**  
308 (75.3% of total family child care providers)

**Child Care Centers willing to care for CCS children in Baltimore City**  
129 (66.5% of total child care centers)

Source: LOCATE: Child Care at Maryland Family Network, Baltimore (7/1/21-6/30/22).

\* Formerly Child Care Subsidy Program

**Baltimore City FY22 Allocation (estimated)**  
\$16,857,546 = 2,375 full-time children enrolled

Source: Maryland State Department of Education, Office of Child Care.

#### Special Needs Child Care

**Family providers who serve/have served children with special needs**  
282 (68.9% of total family child care providers in Baltimore)

**Centers who serve/have served children with special needs**  
113 (58.2% of total child care centers in Baltimore)

Source: LOCATE: Child Care at Maryland Family Network, Baltimore (7/1/21-6/30/22).

### Income and Child Care Rates

#### Median Family Income and Family Child Care Rates by Regional Planning District

Average Full-Time Weekly Rates and Percentage of Median Income Spent on Child Care													
Regional Planning District	Median Family Income	0-11 Mos.	%	12-23 Mos.	%	2 Years	%	3-4 Years	%	B/A PreK	%	B/A Schl.	%
Canton	\$74,966	205	14.2%	180	12.5%	158.33	11.0%	158.33	11.0%	100	6.9%	80	5.5%
Carroll Park	\$50,670	241.67	24.8%	225	23.1%	198.33	20.4%	174.17	17.9%	143.33	14.7%	131.67	13.5%
Cherry Hill	\$49,458	200.56	21.1%	179.44	18.9%	167	17.6%	162.5	17.1%	94.44	9.9%	93.33	9.8%
Chinquapin	\$97,177	204.13	10.9%	202.34	10.8%	175.74	9.4%	166.18	8.9%	101.67	5.4%	104.14	5.6%
Clifton	\$82,309	183.54	11.6%	177.29	11.2%	144.46	9.1%	139.04	8.8%	87.14	5.5%	89.77	5.7%
Druid Hill	\$59,826	196.2	17.1%	188	16.3%	168	14.6%	159.25	13.8%	99.5	8.6%	95.56	8.3%
East Baltimore	\$43,423	216	25.9%	205.76	24.6%	178.5	21.4%	161.3	19.3%	110	13.2%	104.5	12.5%
Forest Park	\$77,817	188	12.6%	182.05	12.2%	160	10.7%	152.22	10.2%	81.92	5.5%	87.35	5.8%
Gardenville	\$71,065	182.88	13.4%	175.88	12.9%	163.24	11.9%	149.86	11.0%	100.62	7.4%	99.21	7.3%
Govans/Northwood	\$91,095	203.55	11.6%	194.84	11.1%	169.06	9.7%	158.67	9.1%	107.4	6.1%	100.36	5.7%
Hamilton	\$102,448	200.45	10.2%	189.39	9.6%	164.39	8.3%	156.14	7.9%	90.32	4.6%	91.94	4.7%
Hampden	\$79,569	275	18.0%	275	18.0%	250	16.3%	250	16.3%	0	0.0%	0	0.0%
Highlandtown	\$72,984	195.67	13.9%	180.63	12.9%	163.57	11.7%	156.79	11.2%	92.31	6.6%	97.31	6.9%
Irvington	\$77,738	176.4	11.8%	169.73	11.4%	154.44	10.3%	144.44	9.7%	100.77	6.7%	100	6.7%
Lower Park Heights	\$54,502	179.58	17.1%	175	16.7%	151.92	14.5%	146.92	14.0%	106.11	10.1%	98.5	9.4%
Morrell Park	\$85,666	175	10.6%	165	10.0%	180.83	11.0%	167.5	10.2%	141.25	8.6%	121.25	7.4%
Mount Washington	\$164,705	217.5	6.9%	217.5	6.9%	205	6.5%	156	4.9%	87.5	2.8%	87.5	2.8%
Roland Park	\$192,956	375	10.1%	375	10.1%	375	10.1%	220	5.9%	80	2.2%	80	2.2%
Rosemont	\$54,649	171.58	16.3%	167.37	15.9%	145.42	13.8%	133.08	12.7%	87.19	8.3%	86.88	8.3%
South Baltimore	\$92,001	380	21.5%	380	21.5%	282.5	16.0%	272.5	15.4%	125	7.1%	150	8.5%
Ten Hills	\$97,333	201.88	10.8%	195.31	10.4%	170.31	9.1%	163.23	8.7%	89.58	4.8%	86.67	4.6%
Upper Park Heights	\$38,331	193.18	26.2%	187.92	25.5%	172.83	23.4%	169.08	22.9%	115.45	15.7%	107	14.5%
Waverly	\$63,894	195.58	15.9%	188.08	15.3%	170	13.8%	162.5	13.2%	97.55	7.9%	95.73	7.8%
West Baltimore	\$38,331	190.22	25.8%	183.48	24.9%	164.88	22.4%	151.4	20.5%	92.95	12.6%	88.48	12.0%

\*Note: The percent of income is the child fee times 52, divided by the median family income for that regional planning district. "B/A PreK" is care provided before and/or after a prek program or other half-day program. "B/A Schl" is the care provided before and/or after school. Other rates reflect full-time child care. "NP" indicates that there are no programs for that age group in that area.

Source: MFN/LOCATE: Child Care, 6/22. U.S. Bureau of the Census 2010. Median Income by Regional Planning Districts prepared by LOCATE.

### Income and Child Care Rates

#### Median Family Income and Child Care Center Rates by Regional Planning District

Average Full-Time Weekly Rates and Percentage of Median Income Spent on Child Care													
Regional Planning District	Median Family Income	0-11 Mos.	%	12-23 Mos.	%	2 Years	%	3-4 Years	%	B/A PreK	%	B/A Schl.	%
Brooklyn	\$57,734	225	20.27%	225	20.27%	200	18.01%	187.5	16.89%	130	11.71%	130	11.71%
Canton	\$74,966	250	17.34%	250	17.34%	230	15.95%	226.67	15.72%	150	10.40%	125	8.67%
Cherry Hill	\$50,670	325	33.35%	325	33.35%	275	28.22%	212.5	21.81%	175	17.96%	175	17.96%
Chinquapin	\$49,458	300	31.54%	300	31.54%	229	24.08%	179	18.82%	69	7.25%	97	10.20%
Clifton	\$97,177	291.75	15.61%	260.5	13.94%	193.88	10.37%	183.88	9.84%	94.05	5.03%	99.21	5.31%
Druid Hill	\$82,309	285	18.01%	272.5	17.22%	210	13.27%	190	12.00%	95	6.00%	118.33	7.48%
East Baltimore	\$59,826	353.73	30.75%	325.53	28.29%	286.01	24.86%	242.02	21.04%	83.33	7.24%	88.63	7.70%
Forest Park	\$43,423	283.75	33.98%	273.56	32.76%	205.17	24.57%	186.17	22.29%	120.42	14.42%	121.25	14.52%
Gardenville	\$77,817	261.82	17.50%	257.27	17.19%	197.9	13.22%	182.77	12.21%	132.58	8.86%	124.55	8.32%
Govans/Northwood	\$71,065	265	19.39%	265	19.39%	195.4	14.30%	187.4	13.71%	60	4.39%	130	9.51%
Hamilton	\$91,095	234.67	13.40%	209.33	11.95%	183.3	10.46%	170.75	9.75%	110.2	6.29%	110.2	6.29%
Hampden	\$102,448	393	19.95%	393	19.95%	295	14.97%	295	14.97%	NP		NP	
Highlandtown	\$79,569	387.25	25.31%	394.96	25.81%	318.32	20.80%	273.99	17.91%	72	4.71%	72	4.71%
Irvington	\$72,984	280.83	20.01%	268.33	19.12%	213.57	15.22%	181.07	12.90%	129.14	9.20%	132	9.40%
Lower Park Heights	\$77,738	311.8	20.86%	311.8	20.86%	233	15.59%	223.08	14.92%	128.75	8.61%	135.6	9.07%
Metro Center	\$54,502	344.8	32.90%	341.23	32.56%	282.65	26.97%	237.77	22.69%	135	12.88%	180.5	17.22%
Morrell Park	\$85,666	275	16.69%	275	16.69%	205	12.44%	179.17	10.88%	141.67	8.60%	141.67	8.60%
Mount Washington	\$164,705	415	13.10%	415	13.10%	400.22	12.64%	313.33	9.89%	100	3.16%	100	3.16%
Roland Park	\$192,956	559.33	15.07%	559.33	15.07%	337.12	9.09%	330.87	8.92%	70	1.89%	156.67	4.22%
Rosemont	\$54,649	274	26.07%	250	23.79%	206	19.60%	156.9	14.93%	103.75	9.87%	102.14	9.72%
South Baltimore	\$92,001	528.25	29.86%	494.1	27.93%	357.16	20.19%	285.31	16.13%	NP		NP	
Ten Hills	\$97,333	NP		NP		185	9.88%	177.5	9.48%	NP		100	5.34%
Upper Park Heights	\$38,331	244.93	33.23%	239.69	32.52%	217.98	29.57%	208.72	28.31%	74.29	10.08%	57.22	7.76%
Waverly	\$63,894	344.9	28.07%	318.91	25.95%	260.57	21.21%	240.03	19.53%	145.5	11.84%	132.17	10.76%
West Baltimore	\$38,331	287.5	39.00%	285.83	38.78%	270.29	36.67%	229.79	31.17%	145.2	19.70%	144	19.53%

\*Note: The percent of income is the child fee times 52, divided by the median family income for that regional planning district. "B/A PreK" is care provided before and/or after a prek program or other half-day program. "B/A Schl" is the care provided before and/or after school. Other rates reflect full-time child care. "NP" indicates that there are no programs for that age group in that area.

Source: MFN/LOCATE: Child Care, 6/22. U.S. Bureau of the Census 2010. Median Income by Regional Planning Districts prepared by LOCATE.

### Definitions

**The American Community Survey (ACS):** An ongoing survey that provides vital information on a yearly basis about our nation and its people. Information from the survey generates data that help determine how more than \$675 billion in federal and state funds are distributed each year. (Census.gov)

**Before/After-School Care:** School-Age child care offers care to children enrolled in Kindergarten or above. Care is provided before and/or after school and during school holidays/vacations. Programs are licensed by the Office of Child Care. Programs may operate from a school building or other licensed facility.

**Census of Population and Housing:** There are two versions of the Census questionnaire: a short form which asks a limited number of population and housing questions of all households, and a long form questionnaire which asks additional social and economic questions of a sample of all households. The user should note that data obtained from a sample are subject to sampling variability, and that there are limitations to many of these data.

**Child Care:** The care or supervision of a child when the child's parent has given the child's care over to another for some portion of a 24-hour-day as a supplement to the parent's primary care of the child. (OCC)

**Child Care Center:** Child care provided in a facility that, for part or all of the day, provides care to children in the absence of the parent. Centers are licensed by the Office of Child Care.

**Child Care Scholarship Program (CCS)\*:** Provides financial assistance to eligible families in securing care for their children in registered family child care homes or licensed child care centers while parents/guardians are attending school, working, or in job training.

**Children with Special Needs:** Children who, because of a disability or other special educational, developmental, physical, emotional, behavioral, or medical condition, require additional care, or whose activities are restricted by a certain condition. (OCC)

**Current Median Family Income:** Current, median family income is from the American Community Survey 2017 to 2021.

**Current Population Estimates:** Current Population Estimates are based on the American Community Survey 2017 to 2021.

**Educational Attainment:** The highest level of school completed or the highest degree received. Educational attainment figures were used for persons over 25 years of age. (U.S. Bureau of the Census)

**Employer-Sponsored Centers:** A child care center located on-site or off-site which is sponsored by a corporation, business, or other employer. Employees are given priority for enrollment slots.

**Family Child Care:** The care given to a child younger than 13 years old or to a developmentally disabled person younger than 21 years old, in place of parental care for less than 24 hours a day, in a residence other than the child's residence and for which the provider is paid. Regulations allow a family child care provider to care for as many as eight children at any time. (OCC)

**Family Income:** Family includes a householder and one or more persons living in the same household who are related to the householder by birth, marriage, or adoption. A household can contain only one family for purposes of census tabulations. (U.S. Bureau of the Census)

**Head Start:** Project Head Start provides comprehensive developmental services for children from low-income families. Head Start is comprised of four components including Education, Health, Parent Involvement, and Social Services. Head Start Centers serve children from age 3 to school entry age from income eligible families.

**Income of Households –** This includes the income of the householder and all other individuals 15 years old and over in the household, whether they are related to the householder or not. Because many households consist of only one person, average household income is usually less than average family income.

**Infant/Toddler:** In the State of Maryland, "infant" means a child under 18 months old. "Toddler" means a child 18 months old or older but younger than 2 years old. (OCC) MFN reports "infant" as a child birth through 23 months of age.

**Kindergarten:** An instructional program for children who are 5 years old by September 1st of each academic year. Programs may be operated by a private or public school. Kindergarten is the year of school which precedes entrance to first grade.

**Nursery Schools:** An instructional program approved or exempted by the Maryland State Department of Education for children who are two through four years old. The maximum length of the program is 6 hours per day, however most operate only a few hours per day and may meet only two or three times per week for a nine month period.

**Owner Costs with Mortgage (Selected Monthly):** The sum of payments for mortgages, deeds of trust, contracts to purchase, or similar debts on the property; real estate taxes; fire hazard, and flood insurance on the property; utilities; and fuels. It also includes, where appropriate, the monthly condominium fees or mobile home costs. A housing unit is owner-occupied if the owner or co-owner lives in the unit even if it is mortgaged or not fully paid for. (U.S. Bureau of the Census)



### Definitions

**Part Day:** A program regulated by OCC with an educational focus for children one or two years before entering kindergarten. These programs are usually 2-3 hrs/day, 2-3 days/week, nine months/year.

**Pre-Kindergarten:** These are publicly funded pre-kindergarten programs for eligible 4-year-old children administered by local boards of education or qualified vendors. The programs have the overall goal of providing learning experiences to help children develop and maintain school readiness skills necessary for successful school performance. Local school systems shall enroll all 4-year-old applicants from economically disadvantaged or homeless families.

**Poverty Level:** The poverty guideline for a family of four persons was \$27,750 in 2022. (U.S. Department of Health and Human Services, Jan 2021)

**Renter Occupied Gross Monthly Rent:** Monthly contract rent plus the estimated average monthly cost of utilities and fuels, if these are paid by the renter. All occupied housing units which are not owner-occupied, whether they are rented for cash rent or occupied without payment of cash rent, are classified as renter-occupied. (U.S. Bureau of the Census)

**Unemployment Rate:** Civilians 16 years old and over are classified unemployed if they (1) were neither “at work” nor “with a job but not at work” during the reference week, and (2) were looking for work during the last four weeks, and (3) were available to accept a job. Also included were civilians who did not work at all during the reference week and were waiting to be called back to a job from which they had been laid off. (U.S. Bureau of the Census)

The Maryland Child Care Resource Network is a public/private partnership designed to expand and improve child care delivery in Maryland. Maryland Family Network manages the Network and operates as its Statewide Coordinating Entity. Funding for this publication was made available by Maryland Family Network, the Maryland State Department of Education, and Maryland’s business community.

For more information regarding the Child Care Demographic Reports, contact:

**Maryland Family Network**

1001 Eastern Avenue, 2nd Floor  
Baltimore, Maryland 21202

tel 410.659.7701 fax 410.783.0814  
[www.marylandfamilynetwork.org](http://www.marylandfamilynetwork.org)

For information regarding technical assistance and training for the child care community, contact:

**Baltimore City Child Care Resource Center  
at The Family Tree**

2108 North Charles Street  
Baltimore, MD 21218  
tel 410.685-5150

*This publication was produced as a work for hire for the benefit of, and with funds from, the Maryland State Department of Education.*

©2023 Maryland State Department of Education

©2023 Maryland Family Network



MARYLAND CHILD CARE  
RESOURCE NETWORK

The Maryland Child Care Resource Network is a public/private partnership designed to expand and improve child care delivery in Maryland. Maryland Family Network manages the Network and operates as its Statewide Coordinating Entity.



This publication was produced as a work for hire for the benefit of, and with funds from, the Maryland State Department of Education.

Content revised February 2023



MARYLAND  
FAMILY  
NETWORK

1001 EASTERN AVENUE, 2ND FLOOR  
BALTIMORE, MARYLAND 21202-4325  
tel 410.659.7701 fax 410.783.0814

[marylandfamilynetwork.org](http://marylandfamilynetwork.org)