



MARYLAND CHILD CARE  
RESOURCE NETWORK

CHILD CARE DEMOGRAPHICS • 2024

## Montgomery County Report

*The Maryland Child Care Resource Network and Maryland Family Network, Inc. are co-publishers of this Montgomery County Report for the Network's Maryland Child Care Demographics Report series. The series includes reports for the State, for each of Maryland's 23 counties and the City of Baltimore.*



MARYLAND  
FAMILY  
NETWORK

### Frequently Requested Child Care Information

Montgomery County is located in Central Maryland and is bordered by Frederick, Howard, and Prince George's Counties. It is approximately 495 square miles in size. It has a population of approximately 1.1 million people, making it 1st in county population count and the most populated county in the state.

Montgomery County's economy includes the technology and health industries. Of the approximately 531,000 civilian employees, the county employs approximately 455,000 people via 34,000 businesses. Approximately 79% are in the private sector, with the largest concentrations in professional and business services and education and health services. The rest are in local government (9%), state government (<1%) and federal government (11%).

Major employers include National Institutes of Health, Naval Support Activity Bethesda, U.S. Food and Drug Administration, Giant Food, Adventist HealthCare, GEICO, Marriott International, Astrazeneca, National Oceanic and Atmospheric Administration, Kaiser Foundation Health Plan, Montgomery College, U.S. Nuclear Regulatory Commission, and Holy Cross Hospital.

Approximately 60% of Montgomery County residents have a Bachelor's degree or higher. For public schools, Montgomery County has approximately 136 elementary schools, 40 middle schools, 25 high schools, and 1 career/tech school<sup>1</sup>. Total public school enrollment is 161,000 students. The county is home to Uniformed Services University of the Health Sciences and Washington Adventist University (four-year) and Montgomery College (two-year)<sup>2</sup>.

#### Child Population 2022

Age Group	Number in age group
0-2 years	36,523
3-4 years	25,753
5 years	12,133
6-8 years	40,228
9-11 years	41,917
<b>Total Children in Households Aged 0-11</b>	<b>156,554</b>

Source: US Bureau of the Census, American Community Survey 2022

#### Child Care Costs as Compared to Other Major Household Expenses

The estimated current median family income in Montgomery is \$152,137<sup>6</sup>. A family of four that included a couple and two children ages 0-23 months and 2-4 years can be expected to have the following yearly household expenses:

Expense	Cost	% of Income
Child Care	\$ 41,208.44	27% <sup>1</sup>
Infant <sup>1</sup>	\$16,127.80	
Preschooler <sup>2</sup>	\$25,080.64	
Food <sup>3</sup>	\$ 2,946.00	2%
Housing <sup>4</sup>	\$ 34,116.00	22%
Taxes <sup>5</sup>	\$ 41,226.00	27%
<b>Total</b>	<b>\$119,496.44</b>	<b>79%</b>

<sup>1</sup> Average cost of full-time care in a family child care home (LOCATE, 2023).

<sup>2</sup> Average cost of full-time care in a child care center (LOCATE, 2023). <sup>3</sup> National average cost of food at home based on a moderate cost plan (Cost of Food at Home Estimated for Food Plans at Four Cost Level, July 2023), U.S. Average, United States Department of Agriculture). <sup>4</sup> Based on U.S. Bureau of the Census 2020 median selected owner costs with a mortgage; included mortgage, taxes, insurance and utilities. <sup>5</sup> State and local taxes per Comptroller of Maryland (2023), Medicare and FICA taxes per moneychimp.com (2023). Taxes do not reflect Earned Income Credit. <sup>6</sup> Current income as shown in the Geolytics Report dated July 2023. This data cannot be compared to previous data.

#### Average Weekly Cost of Full-time Child Care

Montgomery County	Family Child Care Programs	Child Care Centers
0-23 Months	\$326.31	\$465.21
2-4 Years	\$302.34	\$360.41
5 years <sup>1</sup>	\$280.03	\$338.86
School Age Full <sup>2</sup>	\$248.21	\$319.04
School Age B/A <sup>3</sup>	\$171.71	\$158.32

Source: MFN/LOCATE: Child Care, 6/23.

<sup>1</sup> Average cost of full time care for a 5 year old. Defined as child being in full time child care or being in kindergarten and out-of-school child care, i.e., holidays, school closures and summers. <sup>2</sup> Average cost of full time care for a 6+ school age child (out-of-school child care, i.e., holidays, school closures and summers). <sup>3</sup> Average cost of before and after school child care.

<sup>1</sup> Maryland Public School Enrollment by Race/Ethnicity and Gender and Number of Schools, 2022-2023

<sup>2</sup> Brief Economic Facts, Maryland Department of Commerce, 2022

### Population Information

#### Child Population

	2011		2022	
	Montgomery	Maryland	Montgomery	Maryland
0-2 years	37,827	215,677	36,523	205,809
3-4 years	25,945	149,276	25,753	152,669
5 years	11,820	73,189	12,133	72,489
6-8 years	38,603	216,607	40,228	224,287
9-11 years	38,629	224,348	41,917	231,904
Total	152,824	879,097	156,554	887,158

Source: US Bureau of the Census, American Community Survey 2011, 2022

#### Female Population (selected ages)

Age Group	2011	2022
Aged 20-24	26,358	30,183
Aged 25-29	32,898	30,653
Aged 30-34	33,557	34,221
Total Aged 20-34	92,813	95,057

Source: US Bureau of the Census, American Community Survey 2011, 2022

#### Work Force Information

##### Total Population Ages 16+ in Work Force

	Montgomery	Maryland
<b>2022</b>		
Females	286,024	1,618,655
Males	306,658	1,713,303
<b>2011</b>		
Females	295,864	1,706,926
Males	314,040	1,772,418
<b>Change</b>		
Females	-3.3%	-5.2%
Males	-2.4%	-3.3%

Source: US Bureau of the Census, American Community Survey 2011, 2022

\* Does not include the population Not in the Labor Force

#### Females Aged 16+ with Children

Age Group	2011	2022	Change
Total Children			
Under 6 years old	74,020	71,927	-2.8%
Children Under 6 with all custodial parents working	51,734	54,089	4.6%
Total Children 6-17 years old	150,678	162,451	7.8%
Children 6-17 with all custodial parents working	115,136	128,475	11.6%

Source: US Bureau of the Census, American Community Survey 2011, 2022

#### Total Population

	Montgomery	Maryland
2022	1,056,910	6,161,707
2021	1,057,201	6,148,545
2011	959,738	5,736,545
2000	873,341	5,296,486
1990	757,027	4,780,753
1980	579,053	4,216,975

Source: US Bureau of the Census, 1980, 1990, 2000; American Community Survey 2011, 2022

#### Male Population (selected ages)

Age Group	2011	2022
Aged 20-24	27,111	30,699
Aged 25-29	31,701	30,931
Aged 30-34	30,949	33,408
Total Aged 20-34	89,761	95,038

Source: US Bureau of the Census, American Community Survey 2011, 2022

#### Households

	2011	2022
Total household population	951,562	1,048,305
Total number of households	355,434	385,284
Average household size	2.68	2.72

Source: US Bureau of the Census, American Community Survey 2011, 2022

#### Females Aged 16+ with Children Under 18

Age Group	2011	2022	Change
Females (16+) with children under 18	118,235	114,172	-3.4%
Females (16+) with children under 18, in the workforce	87,811	91,651	4.4%

Source: US Bureau of the Census, American Community Survey 2011, 2022

### Census Information

#### Families and Poverty

	2011	% in Poverty	2022	% in Poverty	% Change
Families Below Poverty Level	10,155	4.2%	13,121	4.9%	29.2%
All Families with Children Under 5	48,544		44,492		-8.3%
All Families w Children Under 5 Below Poverty Level	3,830	7.9%	4,008	9.0%	4.6%
All Families w Children Under 18	125,465		131,020		4.4%
All Families w Children Under 18 Below Poverty Level	8,102	6.5%	9,120	7.0%	12.6%

Source: US Bureau of the Census, American Community Survey 2011, 2022

#### Children and Poverty

	2011	% in Poverty	2022	% in Poverty	% Change
Total Related Children Under 18	228,975		239,131		4.4%
Total Children Under 18 Below Poverty Level	17,610	7.7%	20,929	8.8%	18.8%
Total Children Under 5 Below Poverty Level	5,292	8.4%	6,062	10.0%	14.6%
Children 5-17 Below Poverty Level	12,318	7.4%	14,867	8.3%	20.7%

Source: US Bureau of the Census, American Community Survey 2011, 2022

#### Educational Attainment for Adults over 25 Years

	Montgomery	% of Adults	Maryland	% of Adults
Total Adults Aged 25 or More	729,862		4,260,095	
High School Graduate or Higher	666,046	91.3%	3,876,178	91.0%
Bachelors Degree or Higher	438,124	60.0%	1,798,746	42.2%

Source: US Bureau of the Census, American Community Survey 2011, 2022

#### Families

Montgomery	2011	2022	% Change
Total Families	242,848	266,286	9.7%
Total # of All Families with Related Childrend Under Age 6*	50,320	46,331	-7.9%
Total # of All Families with Related Childrend Under Age 18	118,235	121,957	3.1%
Maryland	2011	2022	% Change
Total Families	1,428,101	1,525,066	6.8%
Total # of All Families with Related Childrend Under Age 6*	269,284	262,824	-2.4%
Total # of All Families with Related Childrend Under Age 18	656,740	643,101	-2.1%

Source: US Bureau of the Census, American Community Survey 2011, 2022

\*Includes Families with children under 6 AND Families with children under 6 and aged 6-17

### Income, Unemployment and Housing Information

#### Annual Wage Rate Information

Public School Teacher Salary (Montgomery County) <sup>1</sup>	\$86,686
Public Teacher Salary Average MD <sup>1</sup>	\$79,420
Non Public School Teacher Salary Average (National) <sup>2</sup>	\$67,201
Family Child Care Provider (County) <sup>3</sup>	\$54,672
Child Care Center Director (County) <sup>3</sup>	\$48,134
Center Senior Staff /Teacher(County) <sup>3</sup>	\$30,810
Center Aide (Count) <sup>3</sup>	\$19,671

1. Average Teacher Salary MSDE Sept 2023
2. National Association of Independent Schools (NAIS) 2022- 2023 Year
3. MFN's 2022 Statewide Survey of Family Child Care Providers and Child Care Centers.

#### Family Income

##### Median Family Income

Montgomery	\$152,137
Maryland	\$120,081

Source: US Bureau of the Census, American Community Survey 2022

##### Median Household Income<sup>1</sup>:

Montgomery	\$125,583
Maryland	\$98,461

##### Income Distribution Percent Households

	Montgomery	Maryland
Under \$25,000	8.2%	11.6%
\$25,000-\$49,999	10.2%	13.2%
\$50,000-\$74,999	10.8%	13.6%
\$75,000 +	70.8%	61.6%
Total Households	385,284	2,318,124

Source: US Bureau of the Census, American Community Survey 2022  
NOTE: Percentages may not total 100% because of rounding

#### Housing Information

	Montgomery	%	Maryland	%
Owner-Occupied housing	252,457	65.5%	1,564,056	67.5%
Renter-Occupied housing	132,827	34.5%	754,068	32.5%
Mean Value of Owner-Occupied Housing	\$588,900		\$380,500	
Median Selected Monthly Owner Costs with a Mortgage	\$2,843		\$2,245	
Median Gross Residential Monthly Rent	\$1,957		\$1,598	

Source: US Bureau of the Census, American Community Survey 2022

#### Unemployment Rate

	Montgomery	Maryland
2001	2.6%	4.0%
2002	2.5%	3.9%
2003	2.5%	4.1%
2004	2.2%	3.9%
2005	2.8%	3.9%
2006	2.7%	3.7%
2007	2.7%	3.6%
2008	3.3%	4.5%
2009	5.3%	7.1%
2010	5.5%	7.3%
2011	5.5%	7.2%
2012	4.9%	6.5%
2013	4.9%	6.2%
2014	4.5%	5.6%
2015	4.0%	5.0%
2016	3.6%	4.5%
2017	3.2%	4.3%
2018	3.8%	4.5%
2019	3.4%	3.9%
2020	8.1%	8.3%
2021	6.4%	6.7%
2022	3.3%	3.7%
2023	1.5%	1.7%

MD Department of Labor Local Area Unemployment Statistics (LAUS) June 2023.

### Supply of Regulated Early Childhood Programs and Education

#### Children's Programs by Type with Capacity/ Enrollment

	# of Programs	Capacity <sup>1</sup>
Family Child Care Providers	779	6,209
*OCC Licensed Group Programs	522	40,423
8-12 Hour Child Care Centers	368	29,745
Infant/Toddler	165	1,619
Part-Day	59	N/A
Before/after School (School & Center-Based)	301	23,897
Employer-Sponsored Centers	8	928
Nursery Schools	124	N/A
Private Kindergarten	64	N/A
**Head Start	25	648
***Early Head Start	2	124
***Public Pre-Kindergarten Sites	64	N/A
<b>Total Infant/Toddler</b>	<b>745</b>	<b>2,037</b>

<sup>1</sup>Some providers may still be closed due to COVID 19 considerations.

\*Note: Numbers do not total because facilities may have more than one type of program. Unless otherwise indicated, all programs are privately funded.

\*\* Federally funded programs which include Head Start, Early Head Start and Home-based Head Start.

\*\*\*State funded.

Source: MFN/LOCATE Child Care, 6/23; Maryland State Department of Education; Department of Health and Mental Hygiene.

#### Education

##### Public and Private Schools (Elementary and Middle)

	Public	Private*
Elementary Schools	136	33
Middle Schools	40	0
Combined	0	95

##### Elementary School Enrollment

	Public	Private*
Pre-Kindergarten	4,308	2,496
Kindergarten	10,602	2,153
Grades 1 - 6	69,366	11,444
<b>Total</b>	<b>84,276</b>	<b>16,093</b>

Source: MSDE, 2022-23 school year. Enrollment figures are for September 30, 2022.

\*Self reported data from Maryland Nonpublic Schools as reported to MSDE.\*Self reported data from Maryland Nonpublic Schools as reported to MSDE.

### Supply of Regulated Early Childhood Programs and Education

#### Density of Family Providers and Center Programs by Community/Zip Code

The following chart shows the number of registered family child care providers and licensed full-day child care centers in Montgomery as of June 30, 2023.

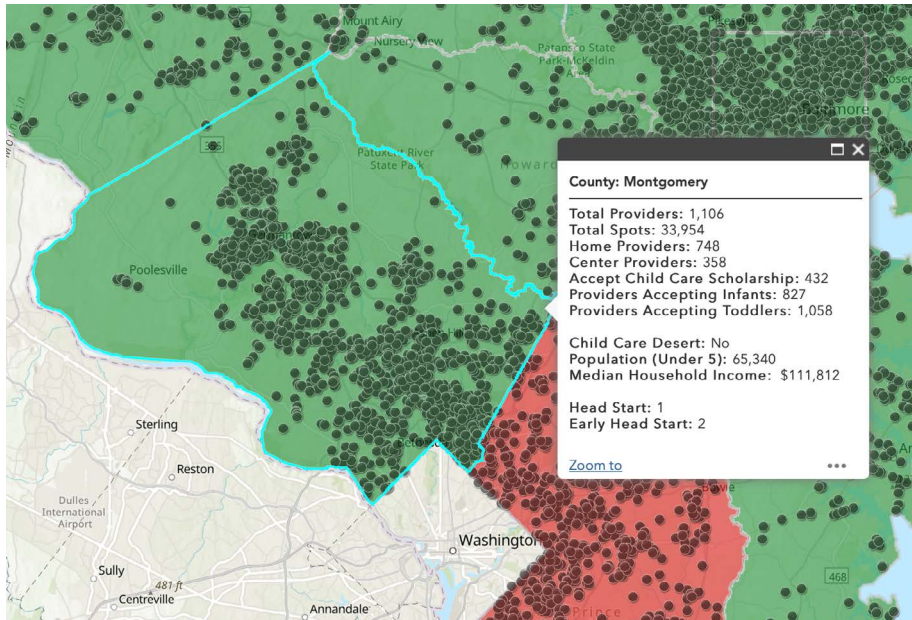
Community/ Zip Code	Family Providers	8-12 Hour %	Centers	%
Ashton 20861	2	0.3%	1	0.3%
Bethesda 20814	10	1.3%	25	6.8%
Bethesda 20816	3	0.4%	8	2.2%
Bethesda 20817	22	2.8%	21	5.7%
Bethesda 20892	0	0.0%	2	0.5%
Bethesda 20817	1	0.1%	0	0.0%
Boyd's 20841	9	1.2%	3	0.8%
Brookeville 20833	4	0.5%	0	0.0%
Burtonsville 20866	16	2.1%	2	0.5%
Cabin John 20818	1	0.1%	1	0.3%
Chevy Chase 20815	1	0.1%	10	2.7%
Clarksburg 20871	1	0.1%	0	0.0%
Clarksburg 20871	39	5.0%	2	0.5%
Damascus 20872	17	2.2%	5	1.4%
Darnestown 20874	3	0.4%	2	0.5%
Darnestown 20878	0	0.0%	1	0.3%
Derwood 20855	7	0.9%	3	0.8%
Dickerson 20838	0	0.0%	1	0.3%
Gaithersburg 20877	22	2.8%	12	3.3%
Gaithersburg 20878	37	4.7%	12	3.3%
Gaithersburg 20879	24	3.1%	7	1.9%
Gaithersburg 20882	8	1.0%	1	0.3%
Gaithersburg 20886	7	0.9%	2	0.5%
Gaithersburg 20899	0	0.0%	1	0.3%
Garrett Park 20896	0	0.0%	3	0.8%
Germantown 20874	61	7.8%	17	4.6%
Germantown 20876	37	4.7%	11	3.0%
Kensington 20895	7	0.9%	8	2.2%
Laytonsville 20882	1	0.1%	0	0.0%
Montgomery Village 20886	21	2.7%	4	1.1%
Mount Airy 21771	1	0.1%	0	0.0%
North Bethesda 20852	0	0.0%	4	1.1%

Community/ Zip Code	Family Providers	8-12 Hour %	Centers	%
North Potomac 20878	15	1.9%	5	1.4%
Olney 20832	27	3.5%	11	3.0%
Poolesville 20837	2	0.3%	3	0.8%
Potomac 20854	19	2.4%	21	5.7%
Rockville 20850	20	2.6%	28	7.6%
Rockville 20851	18	2.3%	6	1.6%
Rockville 20852	13	1.7%	17	4.6%
Rockville 20853	42	5.4%	10	2.7%
Rockville 20854	0	0.0%	3	0.8%
Rockville 20855	11	1.4%	4	1.1%
Sandy Spring 20860	1	0.1%	2	0.5%
Silver Spring 20910	1	0.1%	0	0.0%
Silver Spring 20901	45	5.8%	13	3.5%
Silver Spring 20902	61	7.8%	13	3.5%
Silver Spring 20903	16	2.1%	3	0.8%
Silver Spring 20904	38	4.9%	18	4.9%
Silver Spring 20905	14	1.8%	5	1.4%
Silver Spring 20906	56	7.2%	13	3.5%
Silver Spring 20910	5	0.6%	13	3.5%
Spencerville 20868	1	0.1%	2	0.5%
Takoma Park 20912	9	1.2%	8	2.2%
Wheaton 20902	3	0.4%	1	0.3%
<b>Totals</b>	<b>779</b>	<b>100%</b>	<b>368</b>	<b>100%</b>

Source: MFN/LOCATE: Child Care, 6/23. NOTE: Percentages may not total 100% because of rounding.

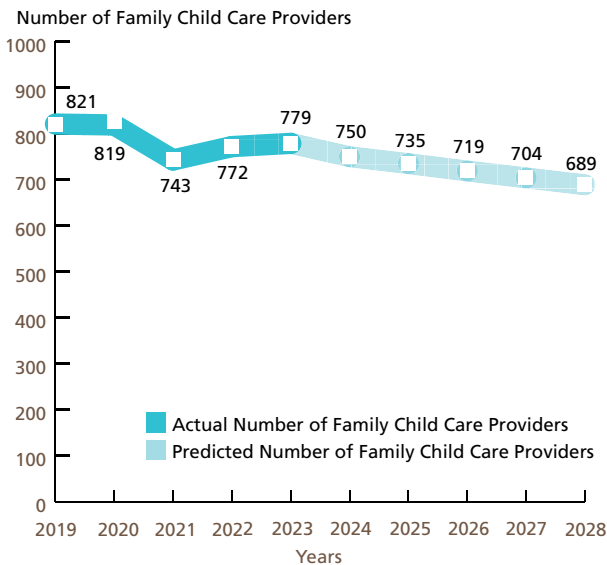
### Supply of Regulated Child Care

Maryland Family Network and Upfront partnered to create a [real-time map](#) of Maryland's child care landscape to identify deserts by county, legislative, and congressional districts.

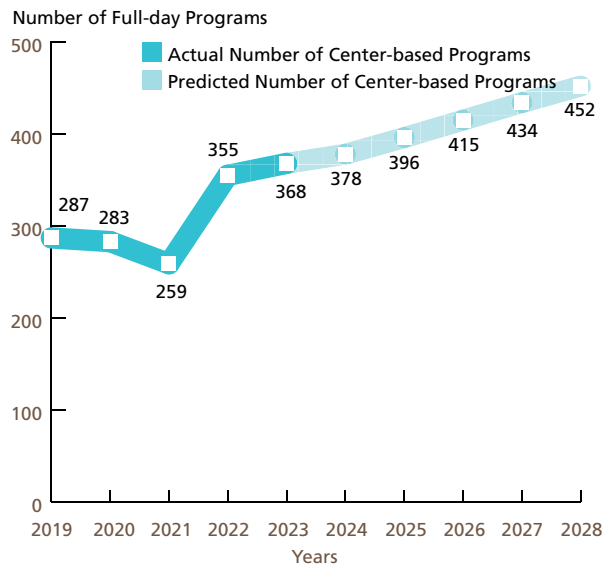


### Past and Anticipated Growth Patterns for Family/Center Providers

Family Child Care Providers in Montgomery 2019-2028



Center-based Programs in Montgomery 2019-2028 Full-day (8 to 12 hours)



These predictions were generated with the use of the Multiple Regression Analysis and Forecasting template. The predictions generated by the Model do not reflect the effects of current changes to social programs affecting child care.

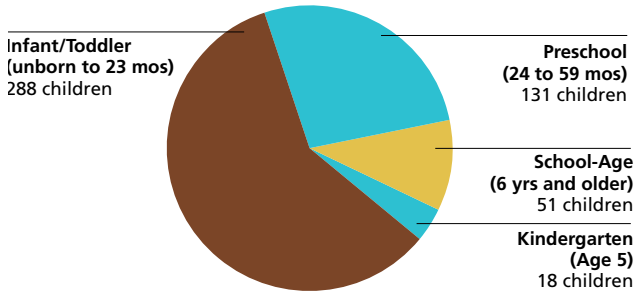
Source: MFN/LOCATE: Child Care, 6/23.



### Demand for Child Care

#### Children Served by Age

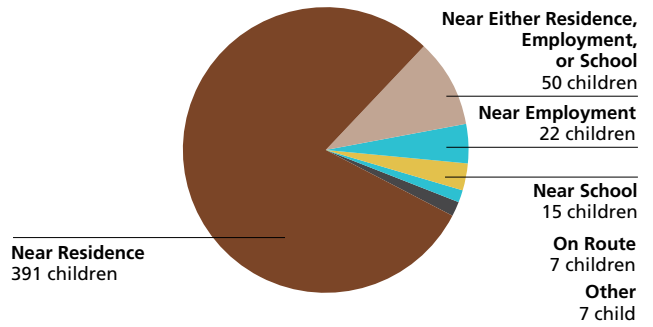
N=488



Source: LOCATE: Child Care at Maryland Family Network, Baltimore (7/1/22-6/30/23).  
NOTE: Percentages may not total 100% because of rounding.

#### Children Served by Locational Preferences for Care

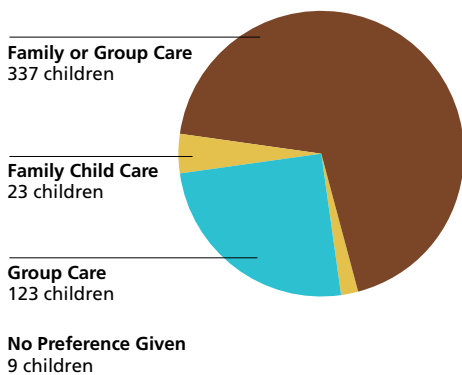
N=492



Source: LOCATE: Child Care at Maryland Family Network, Baltimore (7/1/22-6/30/23).  
NOTE: Percentages may not total 100% because of rounding.

#### Children Served by Type of Care Preferred

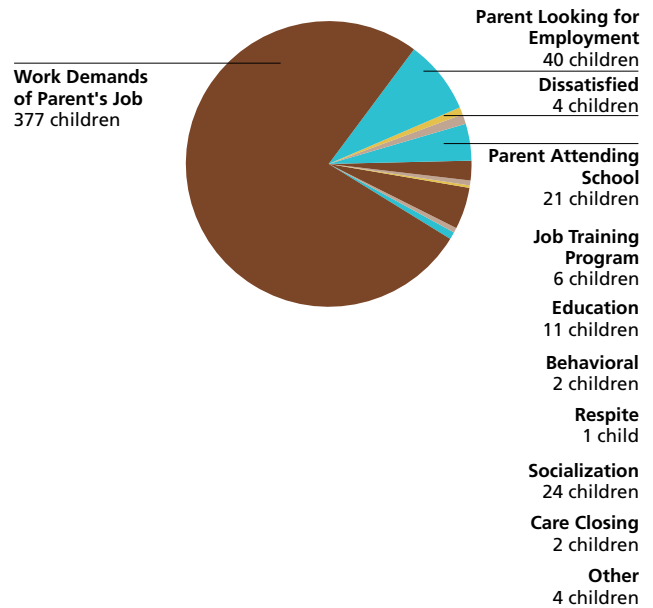
N=492



Source: LOCATE: Child Care at Maryland Family Network, Baltimore (7/1/22-6/30/23).  
NOTE: Percentages may not total 100% because of rounding.

#### Reason Child Care is Needed

N=492



Source: LOCATE: Child Care at Maryland Family Network, Baltimore (7/1/22-6/30/23).  
NOTE: Percentages may not total 100% because of rounding.

### Demand for Child Care

**Number of Children Served by LOCATE: Child Care**  
492 children (7/1/22-6/30/23)

**Full-time or Part-time Care Needs of Children Served** N=492

Full-time: 382 children

Part-time: 95 children

Other\*: 15 children

\* Includes requests for sick, backup and temporary care.

Source: LOCATE: Child Care at Maryland Family Network, Baltimore (7/1/22-6/30/23).  
Note: Percentage may not total 100% because of rounding.

### Working Parents Assistance Program (WPA)\*

**Number of Family Child Care Providers serving WPA Children in Montgomery**  
50 (6% of all family providers in the county)

**Number of Child Care Centers serving WPA Children in Montgomery**  
94 (26% of all family providers in the county)

**Total Allocated funding for WPA**  
\$1,656,348.0 = 60 children served

\* WPA is a subsidy program in Montgomery County Maryland offering additional child care financial assistance to residents of Montgomery County.

Source: Montgomery County Government, 2023.

### Major Factors Important to Parents Who Found Child Care in Montgomery County

Factor	Count
Cost	21
Environment	15
Proximity	14
Caregiver	9
Program	7
Vacancy	5
Hours	4
Transportation	3
Escort	1

Source: LOCATE: Child Care at Maryland Family Network, Baltimore (7/1/22-6/30/23).

### Supply of Child Care

#### Child Care Scholarship Program (CCS)\*

**LOCATE Calls received from parents with children eligible for Child Care Scholarship**  
94 (19% of all calls)

**LOCATE Calls received from parents with children receiving Child Care Scholarship**  
178 (36% of all calls)

Source: LOCATE: Child Care at Maryland Family Network, Baltimore (7/1/22-6/30/23).  
\* Formerly Child Care Subsidy Program

#### Child Care Scholarship Program (CCS)\*

**Family Child Care Providers willing to care for CCS children in Montgomery County**  
261 (34% of total family child care providers)

**Child Care Centers willing to care for CCS children in Montgomery County**  
189 (51% of all 8-12 hour centers in the county)

LOCATE: Child Care at Maryland Family Network Baltimore, June 2023.  
\* Formerly Child Care Subsidy Program

**Montgomery County FY23 Allocation (estimated)**  
\$27,788,683 = 3,415 full-time children enrolled

Source: Maryland State Department of Education, Office of Child Care.

#### Special Needs Child Care

**Family providers who serve/have served children with special needs<sup>1</sup>**  
144 (18% of total family child care providers in Montgomery)

**Centers who serve/have served children with special needs**  
141 (38% of total child care centers in Montgomery)

Source: LOCATE: Child Care at Maryland Family Network, Baltimore (7/1/22-6/30/23).

<sup>1</sup>In 2023, LOCATE: Child Care changed the method of tracking providers with Special Needs Experience. Providers now are able to indicate experience with individual special needs. In 2024 and future years, this number will increase as we identify those providers. This number cannot be compared to earlier Demographics.

### Definitions

**The American Community Survey (ACS):** is an ongoing survey that provides vital information on a yearly basis about our nation and its people. Information from the survey generates data that help inform how trillions of dollars in federal funds are distributed each year. (Census.gov)

**Before/After-School Care:** School-Age child care offers care to children enrolled in Kindergarten or above. Care is provided before and/or after school and during school holidays/vacations. Programs are licensed by the Office of Child Care. Programs may operate from a school building or other licensed facility.

**Census of Population and Housing:** There are two versions of the Census questionnaire: a short form which asks a limited number of population and housing questions of all households, and a long form questionnaire which asks additional social and economic questions of a sample of all households. The user should note that data obtained from a sample are subject to sampling variability, and that there are limitations to many of these data.

**Child Care:** The care or supervision of a child when the child's parent has given the child's care over to another for some portion of a 24-hour-day as a supplement to the parent's primary care of the child. (OCC)

**Child Care Center:** Child care provided in a facility that, for part or all of the day, provides care to children in the absence of the parent. Centers are licensed by the Office of Child Care.

**Child Care Scholarship Program (CCS)\*:** Provides financial assistance to eligible families in securing care for their children in registered family child care homes or licensed child care centers while parents/guardians are attending school, working, or in job training.

**Children with Special Needs:** Children who, because of a disability or other special educational, developmental, physical, emotional, behavioral, or medical condition, require additional care, or whose activities are restricted by a certain condition. (OCC)

**Current Median Family Income:** Current median family income is the value shown in a Geolytics Report dated July 2021.

**Current Population Estimates:** Current Population Estimates are based on the American Community Survey 2022.

**Educational Attainment:** The highest level of school completed or the highest degree received. Educational attainment figures were used for persons over 25 years of age. (U.S. Bureau of the Census)

**Employer-Sponsored Centers:** A child care center located on-site or off-site which is sponsored by a corporation, business, or other employer. Employees are given priority for enrollment slots.

**Family Child Care:** The care given to a child younger than 13 years old or to a developmentally disabled person younger than 21 years old, in place of parental care for less than 24 hours a day, in a residence other than the child's residence and for which the provider is paid. Regulations allow a family child care provider to care for as many as eight children at any time. (OCC)

**Family Household Income:** Family includes a householder and one or more persons living in the same household who are related to the householder by birth, marriage, or adoption. A household can contain only one family for purposes of census tabulations. (U.S. Bureau of the Census)

**Head Start:** Project Head Start provides comprehensive developmental services for children from low-income families. Head Start is comprised of four components including Education, Health, Parent Involvement, and Social Services. Head Start Centers serve children from age 3 to school entry age from income eligible families.

**Infant/Toddler:** In the State of Maryland, "infant" means a child under 18 months old. "Toddler" means a child 18 months old or older but younger than 2 years old. (OCC) MFN reports "infant" as a child birth through 23 months of age.

**Kindergarten:** An instructional program for children who are 5 years old by September 1st of each academic year. Programs may be operated by a private or public school. Kindergarten is the year of school which precedes entrance to first grade.

**Nursery Schools:** An instructional program approved or exempted by the Maryland State Department of Education for children who are two through four years old. The maximum length of the program is 6 hours per day, however most operate only a few hours per day and may meet only two or three times per week for a nine month period.

**Owner Costs with Mortgage (Selected Monthly):** The sum of payments for mortgages, deeds of trust, contracts to purchase, or similar debts on the property; real estate taxes; fire hazard, and flood insurance on the property; utilities; and fuels. It also includes, where appropriate, the monthly condominium fees or mobile home costs. A housing unit is owner-occupied if the owner or co-owner lives in the unit even if it is mortgaged or not fully paid for. (U.S. Bureau of the Census)

### Definitions, cont.

**Part Day:** A program regulated by OCC with an educational focus for children one or two years before entering kindergarten. These programs are usually 2-3 hrs/day, 2-3 days/week, nine months/year.

**Pre-Kindergarten:** These are publicly funded pre-kindergarten programs for eligible 4-year-old children administered by local boards of education or qualified vendors. The programs have the overall goal of providing learning experiences to help children develop and maintain school readiness skills necessary for successful school performance. Local school systems shall enroll all 4-year-old applicants from economically disadvantaged or homeless families.

**Poverty Level:** The poverty guideline for a family of four persons was \$30,000 in 2022. (U.S. Department of Health and Human Services, Jan 2021)

**Renter Occupied Gross Monthly Rent:** Monthly contract rent plus the estimated average monthly cost of utilities and fuels, if these are paid by the renter. All occupied housing units which are not owner-occupied, whether they are rented for cash rent or occupied without payment of cash rent, are classified as renter-occupied. (U.S. Bureau of the Census)

**Unemployment Rate:** Civilians 16 years old and over are classified unemployed if they (1) were neither "at work" nor "with a job but not at work" during the reference week, and (2) were looking for work during the last four weeks, and (3) were available to accept a job. Also included were civilians who did not work at all during the reference week and were waiting to be called back to a job from which they had been laid off. (U.S. Bureau of the Census)

The Maryland Child Care Resource Network is a public/private partnership designed to expand and improve child care delivery in Maryland. Maryland Family Network manages the Network and operates as its Statewide Coordinating Entity. Funding for this publication was made available by Maryland Family Network, the Maryland State Department of Education, and Maryland's business community.

For more information regarding the Child Care Demographic Reports, contact:

**Maryland Family Network**

1800 Washington Blvd, Ste 445  
Baltimore, Maryland 21230-2344  
tel 410.659.7701 fax 410.783.0814  
[www.marylandfamilynetwork.org](http://www.marylandfamilynetwork.org)

For information regarding technical assistance and training for the child care community, contact:

**Montgomery County Child Care Resource and Referral Center**

Montgomery County Department of  
Health & Human Services  
1401 Rockville Pike, Suite 200  
Rockville, MD 20852  
tel 240.777.GROW (4769)

*This publication was produced as a work for hire for the benefit of, and with funds from, the Maryland State Department of Education.*

©2024 Maryland State Department of Education

©2024 Maryland Family Network



MARYLAND CHILD CARE  
RESOURCE NETWORK

The Maryland Child Care Resource Network is a public/private partnership designed to expand and improve child care delivery in Maryland. Maryland Family Network manages the Network and operates as its Statewide Coordinating Entity.



This publication was produced as a work for hire for the benefit of, and with funds from, the Maryland State Department of Education.

Content revised January 2024



MARYLAND  
FAMILY  
NETWORK

1800 WASHINGTON BLVD, STE 445  
BALTIMORE, MARYLAND 21230-2344  
TEL 410.659.7701 FAX 410.783.0814

[marylandfamilynetwork.org](http://marylandfamilynetwork.org)